

Complete information below and make checks payable to CityLit Project. Use one form per registrant. Please send this completed registration form, along with check, to

WITMOW
c/o CityLit Project
120 S. Curley Street
Baltimore, MD 21224

Name _____

Address _____

City, ST Zip _____

Daytime Phone _____

E-mail Address _____

REGISTRATION

\$200 (Before January 15, 2010)

\$250 (After January 15, 2010)

ACCOMMODATIONS (Select One)

3-4 person cabin for 3 nights (four available)

Full size bedroom: \$150

Two-twin bedroom (1 avail/cabin): \$120

5-6 person cabin for 3 nights (four available)

Full size bedroom: \$150

Two-twin bedroom (2 avail/cabin): \$120

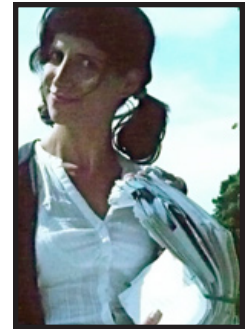
I do / do not want a roommate (circle one). I am registering with a roommate: _____

Total Amount Enclosed: \$ _____

March 4-7, 2010 (3 Nights)
Herrington Manor State Park, Oakland, MD

Write in the Middle of Winter

A western Maryland mountain retreat
for writers. Poetry, fiction, and publishing.
For more information and accommodation options,
call 301-687-4024.



Gerry LaFemina

Poetry, Frostburg State University

Merrill Feitell

Fiction, University of Maryland

Special Guest at March 6 Dinner

Ed Ochester

General Editor, Drue Heinz

Literature Prize

General Editor, Pitt Poetry Series

University of Pittsburgh Press

Presented by



www.frostburg.edu/cwcenter
www.CityLitProject.org

